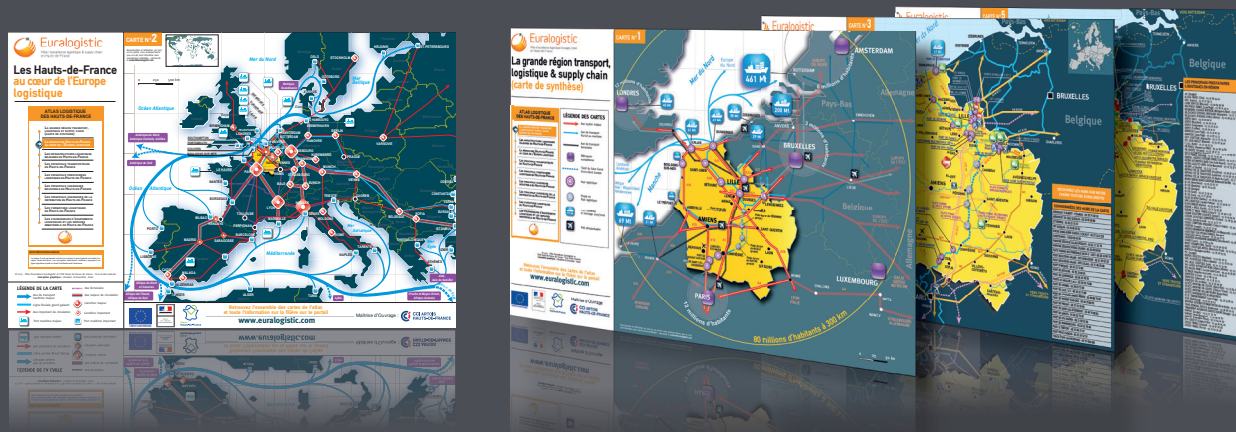




LOGISTICS ATLAS OF THE HAUTS-DE-FRANCE REGION



Document produced by the regional cluster Euralogistic • graphic conception: Cituation et Ensemble, Arras

Find out more on www.euralogistic.com

FOREWORD

The co-modality transportation, logistics and the supply-chain management are the key points of the Hauts-de-France region.

This second publication aims to highlight the advantages of the territory which strives to strengthen its position as a logistics and commercial hub.

Inside a huge consumer basin of 80 million inhabitants around 300 km, the Hauts-de-France region is based in the heart of the European logistics area located at the crossroad of 3 main European capitals: Paris, London and Brussels.

Moreover, the region is ideally linked with the main busy maritime axis of the world with a competitive rail, waterway, and airline network fostered by international trade and by its closeness with Benelux (Belgium –Netherlands – Luxembourg). These assets allow the region to be a competitive stakeholder in the logistics comparing to the other French regions.

E-commerce, the increasing using of the digitalization, the automatization, the flows bundling, the circular economy, the CSR, the promotion of good practices of the supply chain management throughout companies constitute a powerful leverage for growth, innovation and employment in the logistics field. These new issues occur to be the ambition never addressed before by a region. The region Hauts-de-France brings these new strong targets.

This atlas is a precious tool for the companies: 9 gathered thematic maps which help stakeholders to get in touch easily with other main stakeholder (in term of number of employees, warehouse surface...) ranked by fields: providers, leaders, equipment suppliers, training centers...

The Pôle d'Excellence Régional Euralogistic wants to thank the whole co-financers and partners who support this work.

MAPS INDEX

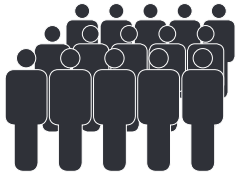
- 1/** The great logistics, transportation and supply-chain region (synthetic map)
- 2/** The Hauts-de-France in the heart of the logistics European area
- 3/** The main logistics infrastructures in the Hauts-de-France
- 4/** The main carriers in the Hauts-de-France
- 5/** The main logistics providers in the Hauts-de-France
- 6/** The main industrial shippers in the Hauts-de-France
- 7/** The main retailers in the Hauts-de-France
- 8/** The logistics training in the Hauts-de-France
- 9/** The logistics equipment suppliers and immaterial services



Euralogistic

Pôle d'excellence logistique & supply chain
en Hauts-de-France

SOME KEY DATA...



6 million inhabitants
The youngest logistics region in France



Almost **80 million consumers** in a potential market area of around 300 km

The logistics employment:
around **14%**
of private regional sector



The **1st French coastline**
(200 km) in tonnage

Lille, **cross-border** metropolitan based on a **main European logistics corridor**



15% of the French **logistics building** stock



Cradle of **retailing and distance selling**



The **entire intralogistics field** is represented (warehousing equipment and technologies)



Euralogistic

Pôle d'excellence logistique & supply chain en Hauts-de-France

LOGISTICS AND SUPPLY CHAIN IN OUR DNA

Who we are?

Euralogistic is a regional center of excellence in logistics and in supply-chain. Its action spreads across the whole Hauts-de-France region.

Owned by the French chamber of commerce, with the support of Europe, the French government, the regional council, public bodies and companies, the Pôle d'Excellence offers a range of services towards logistics stakeholders (companies, platforms, public bodies, prescribers, training centers...):

- Field promotion
- Survey and networking
- Logistics project engineering
- Territories expertise
- Excellence in training and research

The **Pôle d'excellence's headquarter** is based on a campus next to the European multimodal platform entrance, DELTA 3, beside the A1 highway in the south of Lille.

Contact: 00 33 (0)3 21 74 16 12 • www.euralogistic.com

Pôle Euralogistic - Campus Euralogistic

Plate-forme multimodale Delta 3 – 622 Rue des Hauts-de-France
62110 HÉNIN-BEAUMONT - FRANCE

Find out more on "2017 Key data" booklet on www.euralogistic.com

(Available both in french and in english)

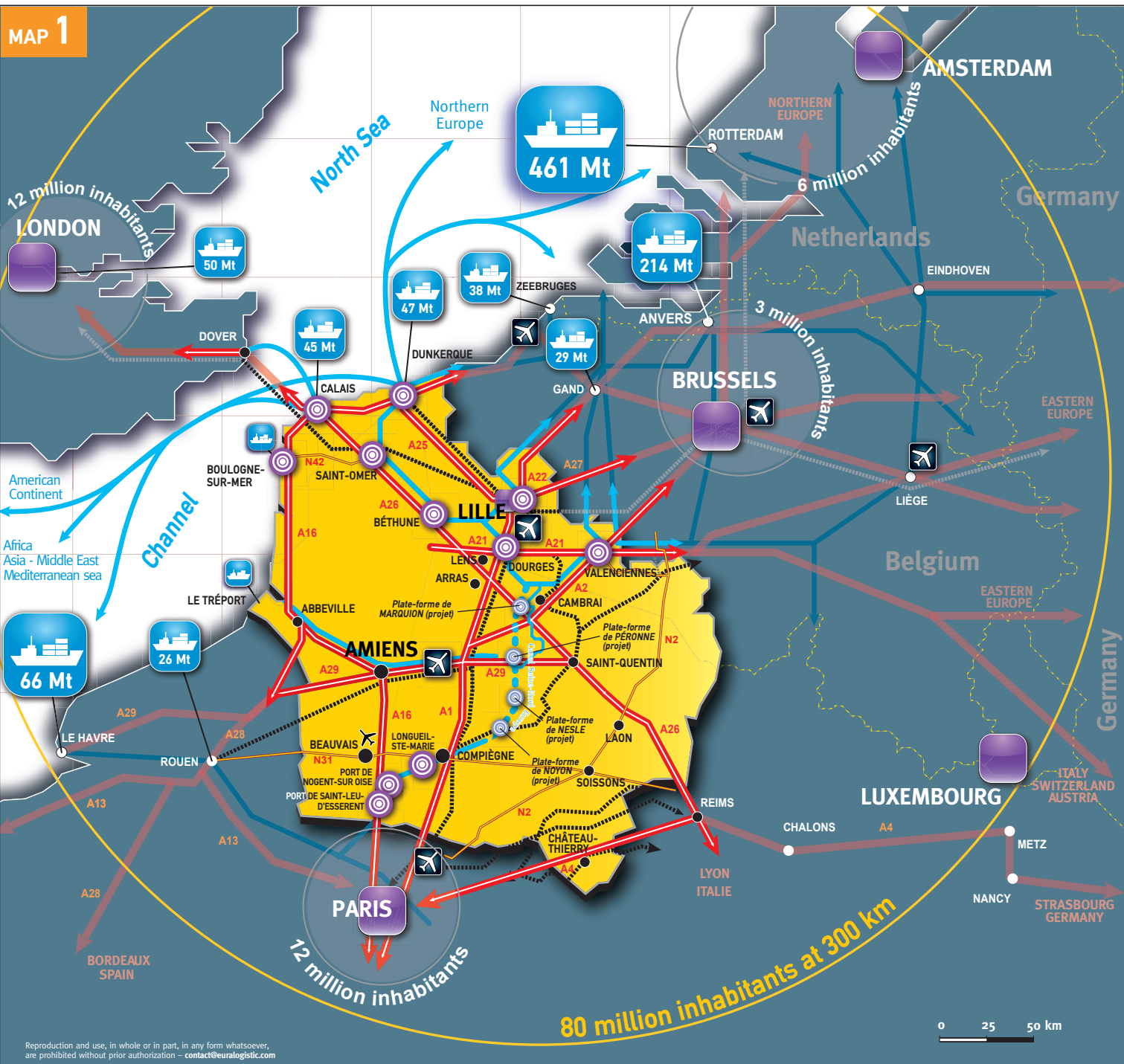
Contracting authority:



With:

The great logistics, transportation & supply-chain region (synthetic map)

MAP 1



LOGISTICS ATLAS OF THE HAUTS-DE-FRANCE

- ▶ THE GREAT LOGISTICS, TRANSPORTATION & SUPPLY CHAIN REGION (SYNTHETIC MAP)
- HAUTS-DE-FRANCE, IN THE HEART OF THE LOGISTICS EUROPEAN AREA
- THE MAIN LOGISTICS INFRASTRUCTURES IN HAUTS-DE-FRANCE
- THE MAIN CARRIERS IN HAUTS-DE-FRANCE
- THE MAIN LOGISTICS PROVIDERS IN HAUTS-DE-FRANCE
- THE MAIN INDUSTRIAL SHIPPERS IN HAUTS-DE-FRANCE
- THE MAIN RETAILERS IN HAUTS-DE-FRANCE
- THE LOGISTICS TRAINING IN HAUTS-DE-FRANCE
- THE LOGISTICS EQUIPMENT SUPPLIERS AND IMMATERIAL SERVICES IN HAUTS-DE-FRANCE

MAP LEGEND

- Main highway
- Waterborne or maritime corridor
- Rail freight corridor
- European metropolitan
- The forthcoming North-Seine Canal Europe route
- Logistics hub
- Hub logistics plan
- Maritime port and 2016 tonnage
- Air freight
- Passengers' airport

© 2017 - Pôle d'excellence Euralogistic and CIR Hauts-de-France - All rights reserved
Graphic conception: Situation et Ensemble - Arras

Find out the whole maps and all information on www.euralogistic.com

The Hauts-de-France in the heart of the logistics European area

LOGISTICS ATLAS OF THE HAUTS-DE-FRANCE

THE GREAT LOGISTICS,
TRANSPORTATION & SUPPLY CHAIN
REGION (SYNTHETIC MAP)

HAUTS-DE-FRANCE, IN THE HEART
OF THE LOGISTICS EUROPEAN AREA

THE MAIN LOGISTICS INFRASTRUCTURES
IN HAUTS-DE-FRANCE

THE MAIN CARRIERS
IN HAUTS-DE-FRANCE

THE MAIN LOGISTICS PROVIDERS
IN HAUTS-DE-FRANCE

THE MAIN INDUSTRIAL SHIPPERS
IN HAUTS-DE-FRANCE

THE MAIN RETAILERS
IN HAUTS-DE-FRANCE

THE LOGISTICS TRAINING
IN HAUTS-DE-FRANCE

THE LOGISTICS EQUIPMENT SUPPLIERS
AND IMMATERIAL SERVICES
IN HAUTS-DE-FRANCE






METHODOLOGY MEMO

The depicted waterborne network is the high gauge canal linked with the Hauts-de-France region. The main maritime destinations gather regular lanes from the Great Maritime Port Of Dunkerque.

© 2017 - Pôle d'excellence Euralogistic and CCIR Hauts-de-France - All rights reserved
Graphic conception: Ciation et Ensemble - Arras

MAP LEGEND

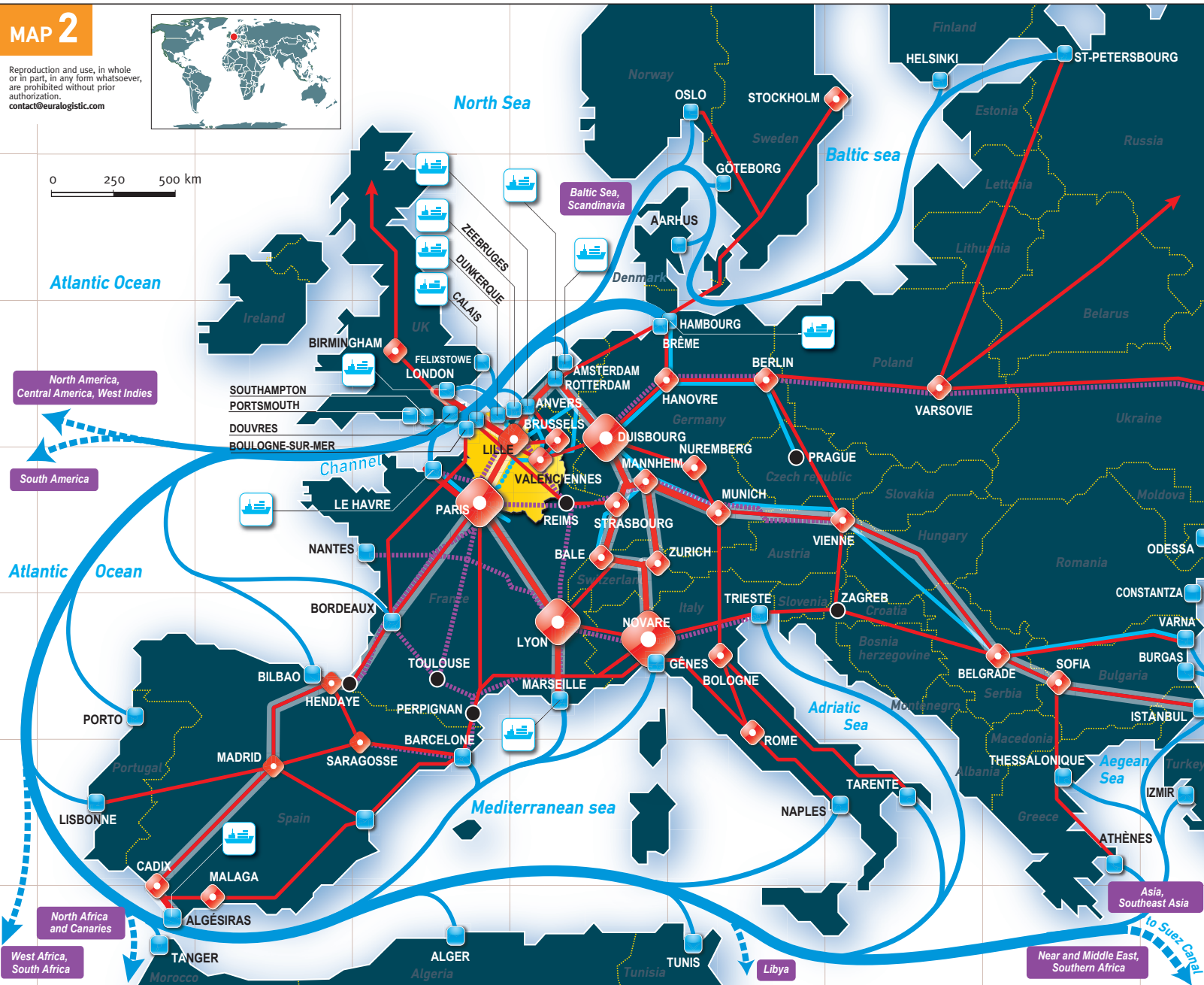
-  Main maritime corridor
-  Wide-gauge waterways
-  Important roadway corridor
-  Main maritime port
-  Rail freight corridor
-  Main roadway corridor
-  Main crossroad
-  Important crossroad
-  Important maritime port

MAP 2

Reproduction and use, in whole or in part, in any form whatsoever, are prohibited without prior authorization.
contact@euralogistic.com



0 250 500 km



Contracting Authority:  **CCI ARTOIS
HAUTS-DE-FRANCE**

Find out the whole maps and all information on
www.euralogistic.com



The main logistics infrastructures in Hauts-de-France

MAP 3



LOGISTICS ATLAS OF THE HAUTS-DE-FRANCE

- THE GREAT LOGISTICS, TRANSPORTATION & SUPPLY CHAIN REGION (SYNTHETIC MAP)
- HAUTS-DE-FRANCE, IN THE HEART OF THE LOGISTICS EUROPEAN AREA
- THE MAIN LOGISTICS INFRASTRUCTURES IN HAUTS-DE-FRANCE
- THE MAIN CARRIERS IN HAUTS-DE-FRANCE
- THE MAIN LOGISTICS PROVIDERS IN HAUTS-DE-FRANCE
- THE MAIN INDUSTRIAL SHIPPERS IN HAUTS-DE-FRANCE
- THE MAIN RETAILERS IN HAUTS-DE-FRANCE
- THE LOGISTICS TRAINING IN HAUTS-DE-FRANCE
- THE LOGISTICS EQUIPMENT SUPPLIERS AND IMMATERIAL SERVICES IN HAUTS-DE-FRANCE

MAP LEGEND

- Highway network
- Main national roads
- Highway rail line
- Freight rail line
- Cities
- Inland wide-gauge navigation
- Inland small and middle-sized navigation
- The forthcoming North-Sea Canal Europe route

PICTOGRAPH LEGEND

- Main maritime port and 2016 tonnage
- Logistics hub (multimodal)
- Logistics hub plan
- National market
- Air freight
- Passenger airport
- Road transportation center
- Rail sorting center
- Secured parking

© 2017 - Pôle d'excellence Euralogistic and CGIR Hauts-de-France - All rights reserved
Graphic conception: Situation et Ensemble - Arras

METHODOLOGY MEMO
The depicted hubs are the main multimodal platform (in term of volumes) with minimum 2 transportation modes (maritime, road, barge). They are different from road transportation center (solely one mode). This list was conducted with the support of the territorial chamber of commerce experts.

DISCOVER THE HUBS ON OUR YOUTUBE CHANNEL EURALOGISTIC

MAP HUBS COORDINATES

AIRPORT OF ALBERT - PICARDIE	- 00 33 (0)3 22 74 38 10
AIRPORT OF LILLE LESQUIN	- 00 33 (0)3 20 49 68 80
CIT RONCQ	- 00 33 (0)3 20 25 71 61
CRT LESQUIN	- 00 33 (0)3 20 86 24 91
DOCKS SEINE-NORD EUROPE / ESCAUT	- 00 33 (0)3 27 51 31 53
EUROTUNNEL	- 00 33 (0) 810 63 03 04
SECURE PARKING CALAIS (POLLEY)	- 00 33 (0)3 21 17 21 78
SECURE PARKING ALL 4 TRUCK	- 00 33 (0)3 21 17 71 80
SECURE PARKING HEAVY WEIGHT (LESQUIN)	- 00 33 (0)3 20 49 68 80
MULTIMODAL PLATFORM DELTA 3 - LDCT	- 00 33 (0)3 28 16 90 70
PORT BOULOGNE-CALAIS - SITE BOULOGNE	- 00 33 (0)3 21 99 62 50
PORT BOULOGNE-CALAIS - SITE CALAIS	- 00 33 (0)3 21 46 29 00
PORT OF ARQUES	- 00 33 (0)3 20 22 73 80
PORT OF BÉTHUNE	- 00 33 (0)3 21 23 84 81
PORT OF DUNKERQUE	- 00 33 (0)3 28 28 78 78
PORTS OF HALLUIN 1 et 2	- 00 33 (0)3 20 22 73 80
PORT OF HARNES	- 00 33 (0)3 20 22 73 80
PORT OF LILLE / LCT	- 00 33 (0)3 20 22 73 80
PORT OF LONGUEIL-SAINTE-MARIE	- 00 33 (0)3 44 86 76 80
PORT OF NOGENT-SUR-OISE	- 00 33 (0)3 44 79 80 81
PORT OF PROUVY	- 00 33 (0)3 27 21 99 45
PORT OF SAINT-LEU-D'ESSERENT	- 00 33 (0)3 44 79 80 81
PORT OF SANTES	- 00 33 (0)3 20 22 73 80
PORT OF SITA AGORA	- 00 33 (0)3 21 08 52 00
PORT OF WAMBRECHIES	- 00 33 (0)3 20 22 73 80
PORT OF LE TRÉPORT	- 00 33 (0)2 35 86 27 67
PRIVATE PORT OF ANZIN	- 00 33 (0)3 27 29 52 53
TRUCK ÉTAPE VALENCIENNES	- 00 33 (0)3 27 43 60 66

Find out the whole maps and all information on www.euralogistic.com

The main carriers in Hauts-de-France

MAP 4



LOGISTICS ATLAS OF THE HAUTS-DE-FRANCE

- THE GREAT LOGISTICS, TRANSPORTATION & SUPPLY CHAIN REGION (SYNTHETIC MAP)
- HAUTS-DE-FRANCE, IN THE HEART OF THE LOGISTICS EUROPEAN AREA
- THE MAIN LOGISTICS INFRASTRUCTURES IN HAUTS-DE-FRANCE
- THE MAIN CARRIERS IN HAUTS-DE-FRANCE**
- THE MAIN LOGISTICS PROVIDERS IN HAUTS-DE-FRANCE
- THE MAIN INDUSTRIAL SHIPPERS IN HAUTS-DE-FRANCE
- THE MAIN RETAILERS IN HAUTS-DE-FRANCE
- THE LOGISTICS TRAINING IN HAUTS-DE-FRANCE
- THE LOGISTICS EQUIPMENT SUPPLIERS AND IMMATERIAL SERVICES IN HAUTS-DE-FRANCE

MAP LEGEND

- Highway network
- Main national roads
- Highway rail line
- Freight rail line
- Cities
- Inland wide-gauge navigation
- Inland small and middle-sized navigation
- The forthcoming North-Seine Canal Europe route

PICTOGRAPH LEGEND

- Local road haulage
- Intercity road haulage
- Truck rental with driver
- Couriers, express freight

THE MAIN CARRIERS IN REGION

- BM CHIMIE VILLIERS-SAINT-PAUL (Villiers-St-Paul) - 03 44 66 62 00
- BTL TRANSPORTS (Amiens) - 03 22 09 00 10
- CALBERSON PICARDIE (Lévigny) - 03 21 45 88 88
- CALBERSON PICARDIE (Poulainville) - 03 22 09 00 60
- CITERNORD (Carvin) - 03 21 74 85 00
- CL NORD (Wancourt) - 03 21 55 38 06
- COPROMER TRANSPORTS (Boulogne-sur-Mer) - 03 21 10 30 30
- COUPE FILS (Dainville) - 03 21 71 53 21
- DARFEUILLE SERVICES (Roye) - 03 22 79 45 15
- D'HAENENS TRANSPORTS (Lesquin) - 03 20 87 01 60
- DEROO TRANSPORTS (Wizernes) - 03 21 93 03 26
- ÉTABLISSEMENTS BLANQUART (Rensucourt) - 03 28 42 92 50
- ETS R DUMONT ET CIE (Lens) - 03 21 28 00 28
- FLANDRE EXPRESS (Sainthin-en-Mélantois) - 03 20 16 17 18
- FM LOGISTIC (Tilloy-les-Mofflaines) - 03 21 50 81 96
- FREVAL (Formerie) - 03 44 04 57 10
- GAUTIER LOGISTIQUE NORD (Libercourt) - 03 21 08 67 00
- GEODIS CALBERSON (La Sentinelle) - 03 27 09 20 00
- GEODIS CALBERSON LILLE EUROPE (Lomme) - 03 20 08 55 55
- GHESTEM LITTORAL (Leuwhem) - 03 28 60 19 33
- GHESTEM NORD (Frelin) - 03 28 82 94 84
- KUEHNE + NAGEL (Roye) - 03 22 87 61 40
- KUEHNE + NAGEL ROAD (Hames) - 03 21 74 86 86
- LANNUTTI FRANCE TRANSPORT (Petite-Forêt) - 03 27 21 12 47
- LEZIER TRANSPORTS (Lens) - 03 21 13 40 00
- LOGITRANS (Fouquières-les-Lens) - 03 21 75 54 42
- MAZET LILLE (Seclin) - 03 20 90 95 95
- MONDIAL RELAY (Hem) - 03 20 20 18 00
- MORY DUCROS (Libercourt) - 03 21 79 76 00
- OLANO LEZIER (Carvin) - 03 21 13 40 00
- PERRENOT BEKAERT (Athies) - 03 21 60 75 75
- PERRENOT DENAIN (Denain) - 03 27 23 50 50
- SA FM LOGISTIC (Crépy-en-Valois) - 03 44 94 42 00
- SA FM LOGISTIC (Longueil-Sainte-Marie) - 03 44 38 31 70
- SARL PAPIN (Montcornet) - 03 23 98 52 26
- SAS CAILLE LOGISTIQUE (Laon) - 03 23 23 54 99
- SAS DOUCY TRANSPORTS (Homblières) - 03 23 08 81 64
- SAS TRANSPORTS CITRA (Morcourt) - 03 23 06 13 20
- SAS TRANSPORTS DELMOTTE (Buirfosse) - 03 23 97 57 00
- SASU LES TRANSPORTS BLONDEL (Morcourt) - 03 23 05 77 77
- SAS UNITED SAVAM (XPO) (Villeneuve-St-Germain) - 03 23 75 63 00
- SAS XPO VOLUME NORD FRANCE (Villeneuve-St-Germain) - 03 23 75 63 00
- SCHENKER FRANCE (Amiens) - 03 22 54 90 00
- SCHENKER FRANCE (Lesquin) - 03 20 62 28 60
- SOLOTRA (Craywick) - 03 28 58 76 76
- SOCIÉTÉ DE TRANSPORTS ET D'AFFRÈTEMENT DU TREGOR (Tilloy-les-Mofflaines) - 03 21 50 87 87
- STEF TRANSPORT (Boulogne-sur-Mer) - 03 21 10 03 21
- STEF TRANSPORT LILLE (Carvin) - 03 21 74 96 96
- TRANSPORTS BAILLY COUROUBLE (Houplines) - 03 20 14 91 49
- TRANSPORTS BRAY (Méricourt) - 03 21 69 26 01
- TRANSPORTS COMATA (Feuchy) - 03 21 15 16 08
- TRANSPORTS DELCROIX (Auby) - 03 27 99 20 20
- TRANSPORTS DEPAEUW (Lompnet) - 03 20 08 09 10
- TRANSPORTS DORCHIES SAS (Flers-en-Escrebieux) - 03 27 95 74 40
- TRANSPORTS GRIMONPREZ P&F (Neuville-en-Ferrain) - 03 28 54 02 10
- TRANSPORTS GUIDEZ (Monchy-le-Preux) - 03 21 14 73 73
- TRANSPORTS JACOT (Saleux) - 03 22 33 58 58
- TRANSPORTS LEROY (Sallaumines) - 03 21 14 73 73
- TRANSPORTS LOGISTIQUE LELEU (Fixecourt) - 03 22 39 47 47
- TRANSPORTS SION (Houplin-Ancoisne) - 03 20 90 06 01
- TSA (St-Martin-au-Laert) - 03 21 38 72 00
- XPO DISTRIBUTION FRANCE (Roye) - 03 22 79 45 15
- XPO LOGISTICS (Libercourt) - 03 61 19 40 11
- XPO LOGISTICS (Longueil-Sainte-Marie) - 03 44 38 63 65
- XPO LOGISTICS (Marck) - 03 21 46 21 56
- XPO LOGISTICS (Monchy-le-Preux) - 03 21 46 21 50

Find out the whole maps and all information on www.euralogistic.com

The main logistics providers in Hauts-de-France

LOGISTICS ATLAS OF THE HAUTS-DE-FRANCE

- THE GREAT LOGISTICS, TRANSPORTATION & SUPPLY CHAIN REGION (SYNTHETIC MAP)
- HAUTS-DE-FRANCE, IN THE HEART OF THE LOGISTICS EUROPEAN AREA
- THE MAIN LOGISTICS INFRASTRUCTURES IN HAUTS-DE-FRANCE
- THE MAIN CARRIERS IN HAUTS-DE-FRANCE
- THE MAIN LOGISTICS PROVIDERS IN HAUTS-DE-FRANCE
- THE MAIN INDUSTRIAL SHIPPERS IN HAUTS-DE-FRANCE
- THE MAIN RETAILERS IN HAUTS-DE-FRANCE
- THE LOGISTICS TRAINING IN HAUTS-DE-FRANCE
- THE LOGISTICS EQUIPMENT SUPPLIERS AND IMMATERIAL SERVICES IN HAUTS-DE-FRANCE

© 2017 - Pôle d'excellence Euralogistic and CCIR Hauts-de-France - All rights reserved
Graphic conception: Situation et Ensemble - Arras

METHODOLOGY MEMO

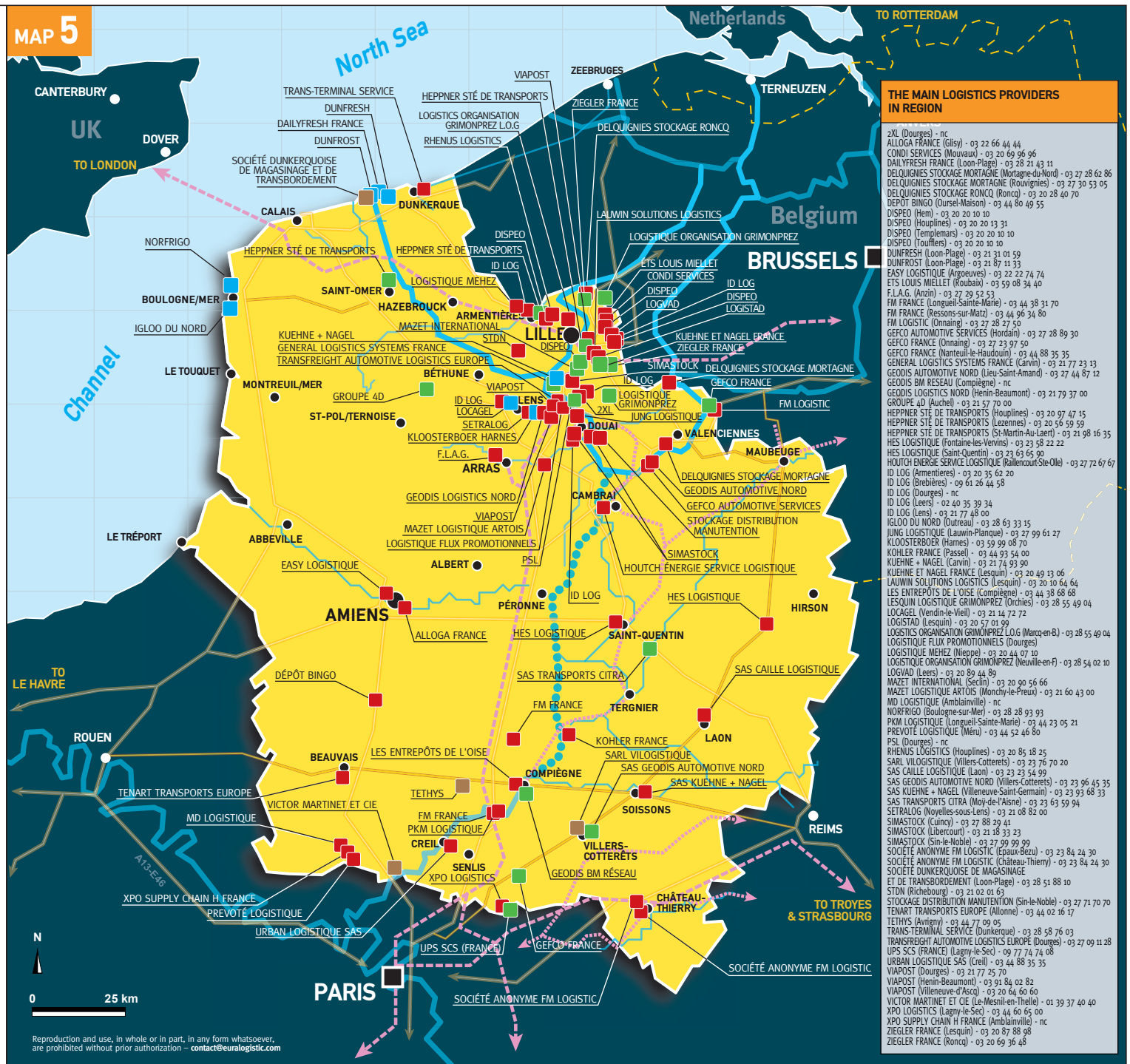
Logistics providers (NAF codes: 52.10A – 52.10B – 52.21Z – 52.22Z – 52.23Z – 52.24A – 52.24B – 52.29B) who own large warehouses (more than 20 000 sq. meters). Industrial companies with storage activities are not included.

MAP LEGEND

- Highway network
- Main national roads
- Highway rail line
- Freight rail line
- Cities
- Inland wide-gauge navigation
- Inland small and middle-sized navigation
- The forthcoming North-Seine Canal Europe route

PICTOGRAPH LEGEND

- Non-cold storages
- Cold storages
- Freight forwarding and transport management
- Non-harbor handling



The main industrial shippers in Hauts-de-France

MAP 6



Reproduction and use, in whole or in part, in any form whatsoever, are prohibited without prior authorization - contact@euralogistic.com

LOGISTICS ATLAS OF THE HAUTS-DE-FRANCE

- THE GREAT LOGISTICS, TRANSPORTATION & SUPPLY CHAIN REGION (SYNTHETIC MAP)
- HAUTS-DE-FRANCE, IN THE HEART OF THE LOGISTICS EUROPEAN AREA
- THE MAIN LOGISTICS INFRASTRUCTURES IN HAUTS-DE-FRANCE
- THE MAIN CARRIERS IN HAUTS-DE-FRANCE
- THE MAIN LOGISTICS PROVIDERS IN HAUTS-DE-FRANCE
- THE MAIN INDUSTRIAL SHIPPERS IN HAUTS-DE-FRANCE
- THE MAIN RETAILERS IN HAUTS-DE-FRANCE
- THE LOGISTICS TRAINING IN HAUTS-DE-FRANCE
- THE LOGISTICS EQUIPMENT SUPPLIERS AND IMMATERIAL SERVICES IN HAUTS-DE-FRANCE

MAP LEGEND

- Highway network
- Main national roads
- Highway rail line
- Freight rail line
- Cities
- Inland wide-gauge navigation
- Inland small and middle-sized navigation
- The forthcoming North-Seine Canal Europe route

PICTOGRAPH LEGEND

- Metallurgy and processing of metals
- Minerals products
- Food industry
- Shipbuilding, aircraft and train construction
- Mechanical industry and equipment
- Automotive industry
- Cosmetic, chemistry and rubber
- Paper mill
- Recycling
- Other industries

© 2017 - Pôle d'excellence Euralogistic and CGIR Hauts-de-France - All rights reserved
Graphic conception: Situation et Ensemble - Arras

METHODOLOGY MEMO
Industrial production companies with significant logistics flows in Hauts-de-France. This list was conducted with the support of the territorial chamber of commerce experts. For the sake of data readability, this map cannot assert its completeness (see NAF codes confusion in the logistics field which obliges an understanding of the synthetic map).

Find out the whole maps and all information on www.euralogistic.com

The main retailers in Hauts-de-France

LOGISTICS ATLAS OF THE HAUTS-DE-FRANCE

THE GREAT LOGISTICS, TRANSPORTATION & SUPPLY CHAIN REGION (SYNTHETIC MAP)

HAUTS-DE-FRANCE, IN THE HEART OF THE LOGISTICS EUROPEAN AREA

THE MAIN LOGISTICS INFRASTRUCTURES IN HAUTS-DE-FRANCE

THE MAIN CARRIERS IN HAUTS-DE-FRANCE

THE MAIN LOGISTICS PROVIDERS IN HAUTS-DE-FRANCE

THE MAIN INDUSTRIAL SHIPPERS IN HAUTS-DE-FRANCE

THE MAIN RETAILERS IN HAUTS-DE-FRANCE

THE LOGISTICS TRAINING IN HAUTS-DE-FRANCE

THE LOGISTICS EQUIPMENT SUPPLIERS AND IMMATERIAL SERVICES IN HAUTS-DE-FRANCE



© 2017 - Pôle d'excellence Euralogistic and CGIR Hauts-de-France - All rights reserved
Graphic conceptions: Situation et Ensemble - Arras

METHODOLOGY MEMO

Plates-formes de distribution générant des flux logistiques importants en Hauts-de-France. Cette liste a été réalisée à la suite d'une consultation des différentes chambres consulaires du territoire. Par soucis de lisibilité des données, cette carte ne peut prétendre à l'exhaustivité (cf. ambiguïté des codes Naf pour la logistique avec nécessaire interprétation pour cartographie de synthèse).

Find out the whole maps and all information on
www.euralogistic.com

Contracting Authority



MAP LEGEND

- Highway network
- Main national roads
- Highway rail line
- Freight rail line
- Cities
- Inland wide-gauge navigation
- Inland small and middle-sized navigation
- The forthcoming North-Seine Canal Europe route

PICTOGRAPH LEGEND

- Textile, clothing and leather
- General trade
- Food trade
- Mail order
- Equipment trade



Reproduction and use, in whole or in part, in any form whatsoever, are prohibited without prior authorization - contact@euralogistic.com

The logistics training inn Hauts-de-France

MAP 8



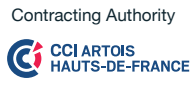
**LOGISTICS ATLAS
OF THE HAUTS-DE-FRANCE**

- THE GREAT LOGISTICS, TRANSPORTATION & SUPPLY CHAIN REGION (SYNTHETIC MAP)
- HAUTS-DE-FRANCE, IN THE HEART OF THE LOGISTICS EUROPEAN AREA
- THE MAIN LOGISTICS INFRASTRUCTURES IN HAUTS-DE-FRANCE
- THE MAIN CARRIERS IN HAUTS-DE-FRANCE
- THE MAIN LOGISTICS PROVIDERS IN HAUTS-DE-FRANCE
- THE MAIN INDUSTRIAL SHIPPERS IN HAUTS-DE-FRANCE
- THE MAIN RETAILERS IN HAUTS-DE-FRANCE
- THE LOGISTICS TRAINING IN HAUTS-DE-FRANCE**
- THE LOGISTICS EQUIPMENT SUPPLIERS AND IMMATERIAL SERVICES IN HAUTS-DE-FRANCE

MAP LEGEND

- Highway network
 - Main national roads
 - Highway rail line
 - Freight rail line
 - Cities
 - Inland wide-gauge navigation
 - Inland small and middle-sized navigation
 - The forthcoming North-Seine Canal Europe route
- PICTOGRAPH LEGEND**
- Apprentices training center in transport and logistics
 - Master and engineers
 - Technological university
 - Public and private high schools and continuing education center
 - Other training centers

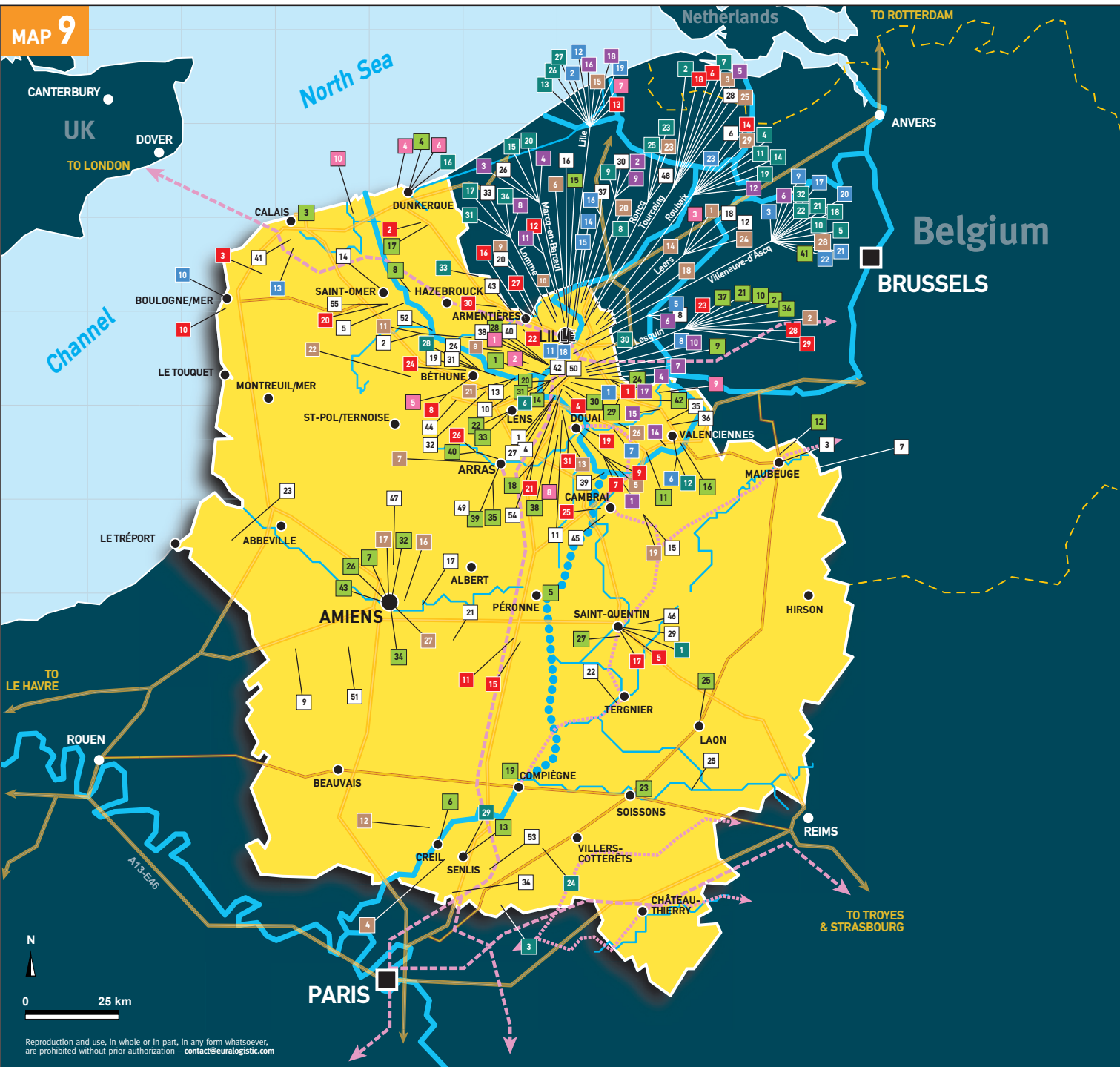
Find out the whole maps and all information on
www.euralogistic.com



Reproduction and use, in whole or in part, in any form whatsoever, are prohibited without prior authorization - contact@euralogistic.com

The logistics equipment suppliers and immaterial services in the Hauts-de-France

MAP 9



LOGISTICS ATLAS OF THE HAUTS-DE-FRANCE

- THE GREAT LOGISTICS, TRANSPORTATION & SUPPLY CHAIN REGION (SYNTHETIC MAP)
- HAUTS-DE-FRANCE, IN THE HEART OF THE LOGISTICS EUROPEAN AREA
- THE MAIN LOGISTICS INFRASTRUCTURES IN HAUTS-DE-FRANCE
- THE MAIN CARRIERS IN HAUTS-DE-FRANCE
- THE MAIN LOGISTICS PROVIDERS IN HAUTS-DE-FRANCE
- THE MAIN INDUSTRIAL SHIPPERS IN HAUTS-DE-FRANCE
- THE MAIN RETAILERS IN HAUTS-DE-FRANCE
- THE LOGISTICS TRAINING IN HAUTS-DE-FRANCE
- THE LOGISTICS EQUIPMENT SUPPLIERS AND IMMATERIAL SERVICES IN HAUTS-DE-FRANCE

MAP LEGEND

- Highway network
- Main national roads
- Highway rail line
- Freight rail line
- Cities
- Inland wide-gauge navigation
- Inland small and middle-sized navigation
- The forthcoming North-Seine Canal Europe route

PICTOGRAPH LEGEND

- SHELIVING AND PROTECTION
- HANDLING ENGINES
- PALLETS, BOXES, ROLLS AND PACKAGING
- CONTAINERS
- AUTOMATISM AND CONVEYORS
- INFORMATION SYSTEM
- PDA, DEVICES AND CODE READER
- LOGISTICS ENGINEERING OFFICES

NOTE MÉTHODOLOGIQUE
Census of main distributors, equipment manufacturer with logistics target, load carrier, engineering offices based in the Hauts-de-France region.
Source: Pôle Euralogistic

Find out the whole maps and all information on
www.euralogistic.com

Contracting Authority
CCI ARTOIS HAUTS-DE-FRANCE



Reproduction and use, in whole or in part, in any form whatsoever, are prohibited without prior authorization - contact@euralogistic.com

